

Akuvox



# Smart Intercom Catalogue



Smart Intercom



# Award Winning Design

The Fusion of Aesthetics  
and Technology

Disclaimer: All trademarks, logos and brand names are the property  
of their respective companies or their affiliates.



# Akuvox S539

## 10" Android Door Phone

- 10" fully-color touch display provides ultra-wide viewing angles
- IP66 & IK08
- 120° wide-angle 5MP starlight and HDR camera
- A dedicated QR camera for QR code scanning
- Customizable motion detection zone
- Face verification accuracy >99%, face comparison speed <0.2s per person, false recognition rate<0.1%
- Multiple verification methods including: facial recognition, NFC,13.56MHz and 125kHz access cards, Bluetooth, and QR code
- Support ingenious and ergonomic screw-driving method for installation



# Akuvox S532

## SIP Video Door Phone with A Seamless Fusion of Analog and IP Technologies.

- Vandal-resistant body, with numeric keypad
- IP66 / IK08
- 2MP camera with wide angles of 130°(H), 90°(V)
- Smart motion detection with precision alerting
- Support multiple access control methods: PIN, NFC,13.56MHz/125kHz access cards, and BLE
- Ability to work with analog intercom systems
- Working Temperature: -40°C ~ +60°C
- Flush-mounted & surface-mounted



# Akuvox X916S

## World's First Android Door Phone with Starlight Camera

- 13" capacitive touch screen
- 316-grade stainless steel panel
- Dual-camera
- Dual-microphone for noise reduction
- Support multiple access control methods: facial recognition, NFC, 13.56MHz and 125kHz access cards, Bluetooth, and QR code



# Akuvox X915S

## Facial Recognition Android Door Phone

- 8" full-color touch display provides ultra-wide viewing angles
- Visible light facial recognition
- Anti-spoofing algorithm against photos and videos
- 5MP primary camera features a built-in HDR mode to tackle a variety of high-contrast scenes
- Fully compliant with the IK10 & IP66
- Support multiple verification methods, including the face, card, PIN, Bluetooth, and QR code
- Ability to integrate with an induction loop antenna for users with hearing aids
- Multiple theme options available to personalize and suit a range of locations
- Cold-resistant (-40°C~+60°C)



# Akuvox X912S

## Vandal-resistant Door Phone for High-end Buildings

- 4" full-color touch display providing ultra-wide viewing angles
- Slim design for limited installation space
- Vandal-resistant body, fully compliant with the IK10 Rating
- Two-way audio communication over IP networks with echo cancellation feature
- Multi-way access feature including face ID, cards, PIN, BLE, QR codes & wave-to-unlock
- Comply with SIP standard for easy integration with SIP capable PBXes
- Comply with ONVIF standard for easy integration with any network surveillance system



# Akuvox R29C

## Facial Recognition Android Door Phone

- 7" capacitive touch screen supporting glove mode
- Aluminum panel
- Dual-camera: one 120° wide-angle 3MP camera with IR and an auxiliary 1MP camera
- Support multiple access control methods: facial recognition, NFC, 13.56MHz and 125kHz access cards, Bluetooth, and QR code
- Cold-resistant version (-40°C to 55°C) available
- Support plasterboard installation
- Black color version available



# Akuvox R29C-L

## Facial Recognition Android Door Phone with 4G Technology

- 7" capacitive touch screen supporting glove mode
- Aluminum panel
- Dual-camera: one 120° wide-angle 3MP camera with IR and an auxiliary 1MP camera
- Support multiple access control methods: facial recognition, NFC, 13.56MHz and 125kHz access cards
- LTE wireless communication requires the minimum efforts for device installation
- On-wall mounting only



# Akuvox R29C-B

## Facial Recognition Android Door Phone with Temperature Detection

- 7" capacitive touch screen supporting glove mode
- Aluminum panel
- Dual-camera: one 120° wide-angle 3MP camera with IR and an auxiliary 1MP camera
- Support multiple access control methods: facial recognition, NFC, 13.56MHz and 125kHz access cards
- Body temperature measurement of people entering buildings
- For indoor use only



# Akuvox R28A

## SIP Video Door Phone with Numeric Keypad

- 4.3" color TFT LCD
- Premium audio and video quality
- Aluminum panel
- 116° wide-angle 2MP camera with automatic lighting
- Support multiple access control methods: NFC, 13.56MHz and 125kHz access cards
- Cold-resistant (-40°C to 55°C)



# Akuvox R27A

## SIP Video Door Phone with Numeric Keypad

- Premium audio and video quality
- Aluminum panel
- 116° wide-angle 2MP camera with automatic lighting
- Support multiple access control methods: NFC, 13.56MHz and 125kHz access cards
- Anti-cold version (-40°C to 55°C) available



# Akuvox R20K

## Compact SIP Video Door Phone with Numeric Keypad

- Premium audio and video quality
- 110° wide-angle 2MP camera with automatic lighting
- Support NFC, 13.56MHz and 125kHz access cards
- Ideal for environments with limited space



# Akuvox R20B

## Compact SIP Video Door Phone

- Five call buttons with nameplates
- Wide-angle camera: 110° (H), 58° (V)
- Two-way audio communication over IP networks with Echo Cancellation feature
- Comply with SIP standard for easy integration with SIP-capable PBXes
- Comply with ONVIF standard for easy integration with any network surveillance system





# Akuvox MD12

## Video Intercom Nametag Module

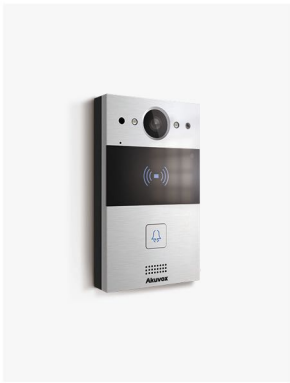
- Nametag module compatible with R20K/R20B
- Twelve call buttons with nametags for easy calling
- IP65
- Backlight compensation behind the nametag buttons
- User-friendly and expandable
- In-wall installation



# Akuvox MD06

## Video Intercom Nametag Module

- Nametag module compatible with R20K/R20B
- Six call buttons with nametags for easy calling
- IP65
- Backlight compensation behind the nametag buttons
- User-friendly and expandable
- In-wall installation



# Akuvox R20A

## Compact SIP Video Door Phone

- Premium audio and video quality
- 116° wide-angle 2MP camera with automatic lighting
- Support NFC, 13.56MHz and 125kHz access cards
- Ideal for environments with limited space



# Akuvox E18C

## 7" Face Recognition Door Phone

- Visible light facial recognition
- Dual cameras with anti-spoofing algorithm against photo and video attacks
- 20,000 face capacity & 20,000 card capacity
- Face recognition duration less than 0.2s/user, face recognition accuracy rate greater than 99.5%
- Allow both audio and video communication to an IP phone, mobile client, or softphone
- Multiple verification methods including: face, PIN, cards NFC, BLE and QR codes
- Support stand-alone operation
- Configuration via web browser
- Support 4G module (optional)



# Akuvox E16C

## Facial Recognition Door Phone

- 5" full-color touch display provides ultra-wide viewing angles
- Visible light facial recognition
- Anti-spoofing algorithm against photos and videos
- Support SIP to provide reliable two-way voice & one-way video communication
- Support multiple verification methods, including the face, card, PIN, Bluetooth, and QR code
- Support stand-alone operation
- Optional body temperature detection function
- Powered by PoE or external power supply



# Akuvox E12

## Compact SIP Video Door Phone

- Real-time 2-way talk
- Live camera viewing
- Cloud or local based storage
- Rated for outdoor use
- Mobile app compatible
- Integrated with any SIP device



# Akuvox E11R

## Compact SIP Video Door Phone

- Premium audio and video quality
- 116° wide-angle 2MP camera with automatic lighting
- Support NFC, 13.56MHz and 125kHz access cards
- Ideal for environments with limited space
- For indoor use only



# Akuvox E21V

## SIP Video Emergency Intercom

- Vandal-resistant with 316-grade stainless steel body
- Premium audio and video quality
- 116° wide-angle 2MP camera with automatic lighting



# Akuvox E21A

## SIP Emergency Intercom

- Vandal-resistant with 316-grade stainless steel body
- IK10 Rating
- Premium audio quality

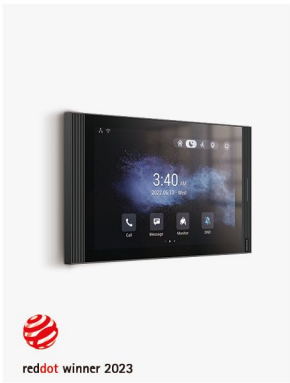


# Akuvox E20S

## SIP Emergency Intercom

- Vandal-resistant body with a panic button
- IK10 Rating
- Two-way audio communication over IP networks with Echo Cancellation feature
- Support advanced group conference call features
- Powered by PoE
- Comply with SIP standard for easy integration with SIP capable PBXes





# Akuvox S567

## 10" Android Indoor Monitor

- Built-in Wi-Fi 6 and Bluetooth feature (Optional)
- 5MP camera (Optional)
- Two-way audio communication
- Automatically adjust the screen brightness
- Built-in smart voice assistant
- Support voice changer
- Comply with SIP standard for easy integration with SIP-capable PBXes
- Powered by PoE or external source
- Support US or European electrical wall box mounting
- White color housing available
- Desk mount available



# Akuvox S565

## 10" Linux Indoor Monitor

- 10" touch screen with 1280x800 resolution
- Stylish industrial design
- Two-way audio communication
- Built-in Wi-Fi (Optional)
- Comply with SIP standard for easy integration with SIP-capable PBXes
- Eight-channel inputs and one built-in relay
- Powered by PoE or external source
- Support US or European electrical wall box mounting
- Desk mount available



# Akuvox S563

## 8" Android Indoor Monitor

- 8" touch screen with 1280x800 resolution
- Stylish industrial design
- Two-way audio communication
- Built-in Wi-Fi (Optional)
- Built-in smart voice assistant
- Support voice changer
- Comply with SIP standard for easy integration with SIP-capable PBXes
- Eight-channel inputs and one built-in relay
- Powered by PoE or external source
- Support US or European electrical wall box mounting
- Desk mount available



# Akuvox S562

## 7" Linux Indoor Monitor

- 7" touch screen with 1024x600 resolution
- Eight-channel inputs and one built-in relay
- Built-in Wi-Fi feature (Optional)
- Stylish industrial design
- Friendly user interface
- Desk mount available



# Akuvox S562-S

## 7" Linux Indoor Monitor

- 7" touch screen with 1024x600 resolution
- Eight-channel inputs and one built-in relay
- Built-in Wi-Fi feature (Optional)
- Stylish industrial design
- Friendly user interface
- Surface mount available



# Akuvox S560

## Audio Indoor Answering Unit

- Ergonomic design, comfortable to use, and easy to operate
- Exceptional two-way audio communication
- Easy integration with SIP PBXes
- Powered by PoE or an external power supply
- Support key customization
- Support speed dial and long-press to call preset numbers
- Support one-press call to property managers
- On-wall or desktop mounting options available



# Akuvox IT88S / IT88P

## Android Indoor Monitor for Smart Home Solution

- 10" capacitive touch screen IPS LCD with 1280 x 800 resolution (IT88S)
- 10" capacitive touch screen IPS LCD with 1920 x 1200 resolution (IT88P)
- Aluminum alloy front panel
- 1MP camera (optional)
- HD video & audio communication
- Built-in Bluetooth and Wi-Fi feature (optional)
- Built-in offline voice assistant
- Eight-channel inputs and two embedded relays
- Support 3rd-party apps installation
- Built-in SIP PBX function
- Desk mount available



# Akuvox C319

## Android Indoor Monitor for Smart Home Solution

- 10" capacitive touch screen IPS LCD with 1280 x 800 resolution
- 1MP camera (optional)
- HD video & audio communication
- Built-in Bluetooth and Wi-Fi feature (optional)
- Built-in offline voice assistant
- Eight channel inputs and two embedded relays
- Support 3rd-party apps installation
- Support RF433/RF869 and Akuvox EP10 (optional)
- Built-in SIP PBX function
- Desk mount available



# Akuvox X933

## Android Indoor Monitor for Smart Home Solution

- 7" touch screen with 1280 x 800 resolution
- Excellent performance with Android 9.0 OS
- Eight-channel inputs and two built-in relays
- Dual-microphone for noise reduction
- Support 3rd-party apps
- White color housing available
- In-wall mounting version available



# Akuvox IT82



## Android Indoor Monitor for Smart Home Solution

- 7" touch screen with 1024 x 600 resolution
- Five programmable pushbuttons
- Eight-channel inputs and one built-in relay
- Support 3rd-party apps
- Optional 1MP camera
- Optional RF 433/869 application

Disclaimer: Amazon, Alexa and all related logos are trademarks of Amazon.com, Inc. or its affiliates.



# Akuvox C315

## Android Indoor Monitor for Smart Home Solution

- 7" touch screen with 1024 x 600 resolution
- Eight-channel inputs and one built-in relay
- Support 3rd-party apps
- White color housing available
- Optional RF 433/869 application



# Akuvox C313

## Budget-friendly Indoor Monitor

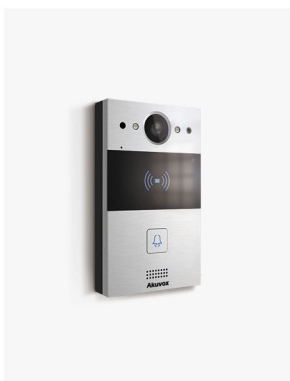
- 7" touch screen with 800 x 480 resolution
- Eight-channel inputs and one built-in relay
- White color housing available



## Akuvox R20K-2

### 2-Wire SIP Video Door Phone

- Two-pin wire for power supply and network access
- Wide-angle camera: 110° (H), 58° (V)
- IC/ID card reader & keypad embedded
- Two-way audio communication over IP networks with Echo Cancellation & noise suppression
- H.264 video compression



## Akuvox R20A-2

### 2-Wire SIP Video Door Phone

- Vandal-resistant body, with a flush button
- Two-pin wire for power supply and network access
- Wide-angle camera: 110° (H), 58° (V)
- IC/ID card reader embedded
- Two-way audio communication over IP networks with echo cancellation & noise suppression
- H.264 video compression



## Akuvox C313W-2

### 2-Wire SIP Indoor Monitor

- 7" touch screen with 800 x 480 resolution
- Eight-channel inputs and one built-in relay
- White color housing available
- Support 2-wire connection



## Akuvox NS-2

### 2-Wire IP Network Switch

- Connect up to six 2-wire IP intercom devices
- Support network and power supply for R20A-2 or C313W-2 through 2-wire cable
- Support multi-level cascade through 2-wire cable
- Long data transmission distance



# Akuvox 2-Wire Adaptor Kit

## Ethernet to 2-Wire Adaptor Kit

- Support PoE input and output
- Long transmission distance via 2-wire cable
- Powered by PoE



# Akuvox NC-2

## Ethernet to 2-Wire Adaptor

- Support PoE Output
- Long transmission distance via 2-wire cable
- Support for paired use or use with Akuvox NS-2
- Powered by 48VDC unit or NS-2

Android IP Video Phone



# Akuvox R49G

## Android IP Video Phone

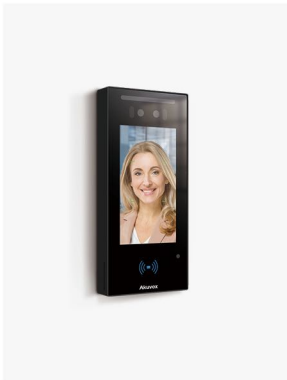
- 7" touch screen with 1024 x 600 resolution
- Excellent performance with Android 9.0 OS
- Premium audio and video quality
- DTMF for remote door opening
- 2MP camera with privacy shutter
- Built-in Bluetooth, USB, and Wi-Fi
- Support 3rd-party apps



## Akuvox A08S

### Mullion Size Access Control Terminal

- Touch keypad
- QR code scanner
- Aluminum alloy panel
- Support multiple access control methods: PIN, NFC, 13.56MHz and 125kHz access cards, Bluetooth, and QR code
- APIs available for easy integration with 3rd-party systems
- Support tamper-proof alarm
- Support up to 20,000 cards and 100,000 card event logs
- BLE 5.0
- Support OSDP & Wiegand protocol
- Ideal for environments with limited space



## Akuvox A05

### Facial Recognition Access Control Terminal

- 5" full-color display provides ultra-wide viewing angles
- Visible light facial recognition
- Anti-spoofing algorithm against photos and videos
- Support multiple verification methods, including the face, card, and QR code
- Support stand-alone operation
- Optional body temperature detection function
- Powered by PoE or external power supply



## Akuvox A03S

### Access Control Terminal

- Toughened glass & aluminum alloy panel
- 13.56MHz & 125kHz RFID card reader & NFC
- Small and exquisite, suitable for installation in narrow spaces
- APIs available for easy integration with 3rd-party systems
- Support tamper-proof alarm
- Support up to 20,000 cards and 100,000 card event logs
- BLE 5.0



## Akuvox A02S

### Access Control Terminal

- Touch keypad
- Aluminum alloy panel
- Support multiple access control methods: PIN codes, NFC, 13.56MHz and 125kHz access cards, and two-factor authentication
- APIs available for easy integration with 3rd-party systems
- Support tamper-proof alarm
- Support up to 20,000 cards and 100,000 card event logs
- Ideal for environments with limited space





# Akuvox A01S

## Access Control Terminal

- Toughened glass & aluminum alloy panel
- Support multiple access control methods: NFC, 13.56MHz and 125kHz access cards
- APIs available for easy integration with 3rd-party systems
- Support tamper-proof alarm
- Support up to 20,000 cards and 100,000 card event logs
- Ideal for environments with limited space



# Akuvox EC33

## Elevator Access Controller

- Support 32 outputs with further expansion to 64 outputs
- Support up to 20,000 cards and 100,000 card event logs
- Support Wiegand 26/34
- Compatible with Akuvox intercoms and access control terminals
- Support remote control via Akuvox Cloud



# Akuvox SR01

## Security Relay

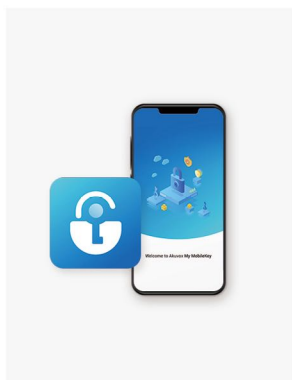
- Ultra-compact form
- Indoor installation
- Encrypted data communication
- Easily placed in most standard installation boxes



# Akuvox A094S

## 4 Door Controller

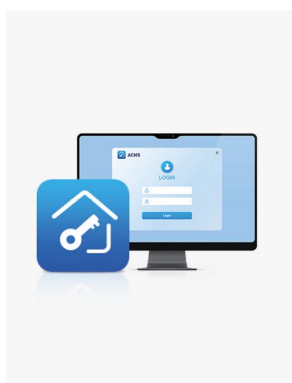
- Support 4 port interfaces for Wiegand readers
- Support 13 port interfaces for input
- Support 8 port interfaces for relay out
- Backlit function icons
- Support backup battery (battery not supplied)
- Support RS485 and Wiegand protocols
- Support tamper-proof alarm
- Support up to 50,000 cards and 100,000 card event logs



## Akuvox My MobileKey

### Bluetooth Mobile Credential

- Support wave-to-unlock feature
- Support door opening using the unlocking tab of the app
- Bluetooth credential secured by the AES256 encryption protocol
- Integration with the Akuvox ACMS
- Available for Android & IOS version



## Akuvox ACMS

### PC-based Access Control Management System for Small and Medium Businesses

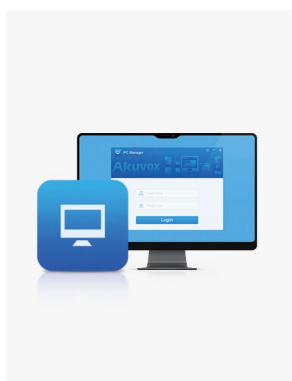
- Staff information management
- Device management
- Access control management
- Access to detailed access logs



## Akuvox SDMC

### On-premise Software for Community-wide Intercom System Management

- Batch deployment of devices automatically
- Real-time video monitoring
- Access control management
- Messaging and ad pushing



## Akuvox PC Manager

### PC-based Management Software for Intercom Configuration

- Automatic search and connection of intercom devices
- Addition, modification, and deletion of intercom configuration
- Batch intercom configuration and software upgrading



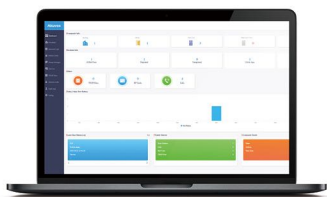
# Akuvox SmartPlus

Smart Cloud-based Intercom Service  
for Residential Buildings



## SmartPlus App

The SmartPlus App allows residents to see and talk to visitors, open doors, monitor building entrances and issue virtual keys from their smartphones, which offers an elevated building entry experience.



## Property Management Portal

The web-based property access management portal of Akuvox SmartPlus offers a bunch of remote-working features that greatly enhance building operation efficiency.



Web: [www.akuvox.com](http://www.akuvox.com)

Email: [sales@akuvox.com](mailto:sales@akuvox.com)

Tel: +86-592-2133061 Ext:7527